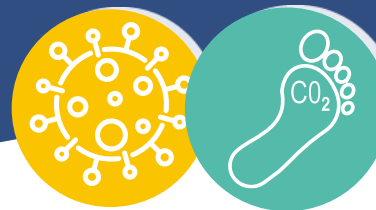


# Understanding the Impact of COVID-19 on Public Health Wales' Emissions



GIG  
CYMRU  
NHS  
WALES

Iechyd Cyhoeddus  
Cymru  
Public Health  
Wales

Public Health Wales commissioned a study to understand the impact of COVID-19 on PHW's greenhouse gas emissions.

Four areas were considered:



Procurement



Travel



Homeworking



Business/Site Operations

## What was measured?

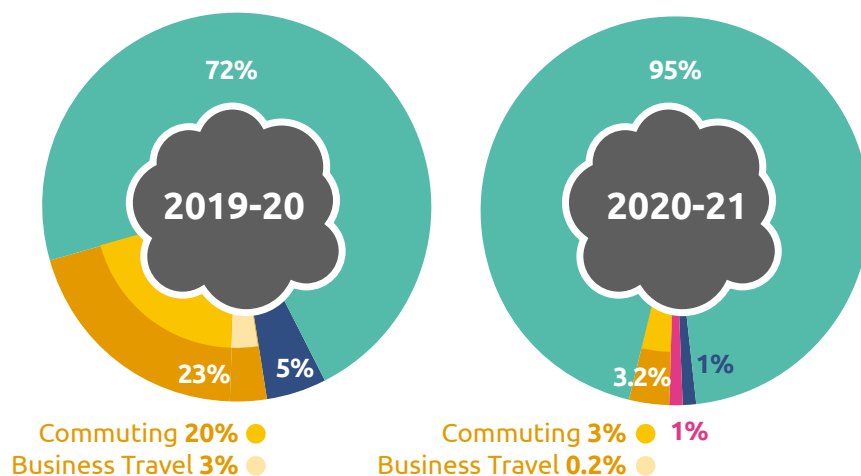
We measured our emissions for 2019/20 and 2020/21 and looked at staff homeworking emissions.

## Why?

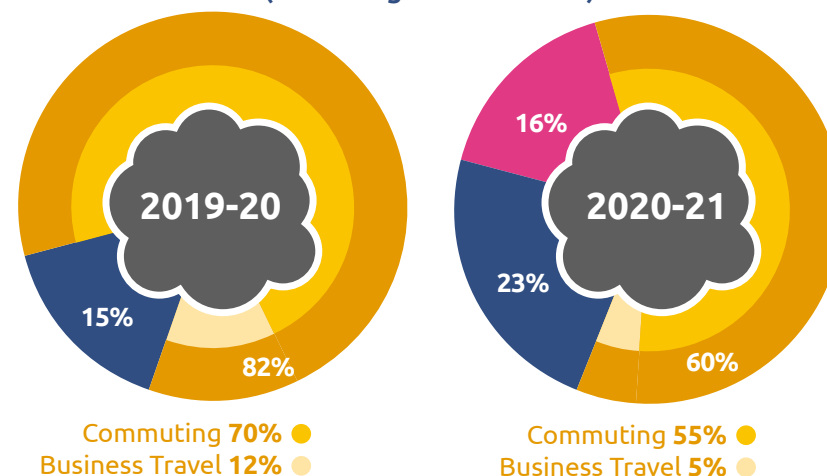
The findings and key recommendations of this study will be used to inform ongoing discussions around implementing more sustainable future ways of working and achieving our Net Zero ambitions.

## Key findings of the study\*

PHW total emissions (including Procurement)



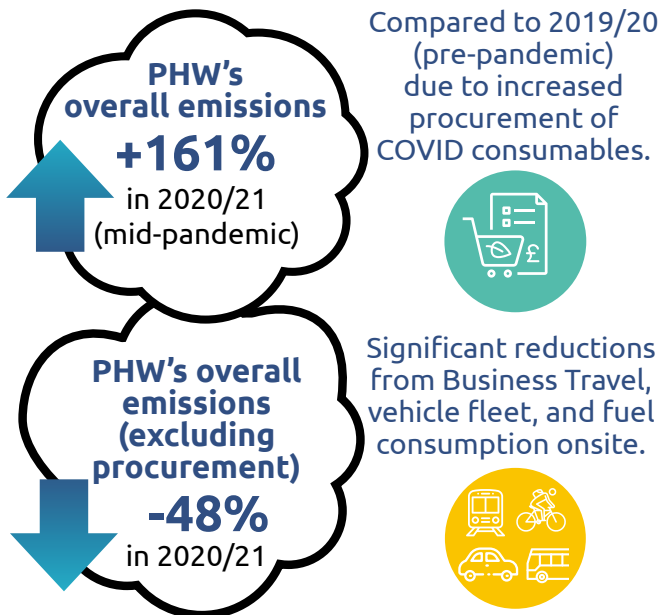
PHW total emissions (excluding Procurement)



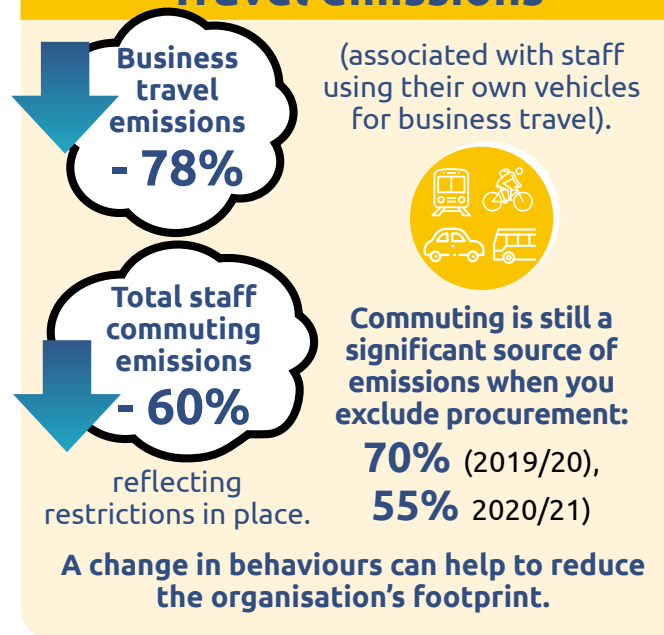
\*Data has been provided excluding procurement emissions to highlight the sources which PHW has the most control/ opportunity to reduce emissions

## Comparing the 2019/20 and 2020/21 reporting years

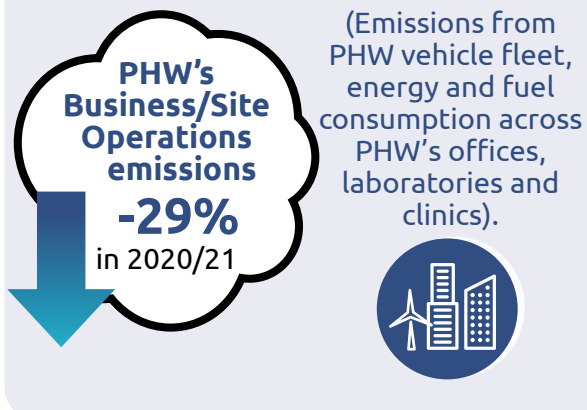
### Overall emissions



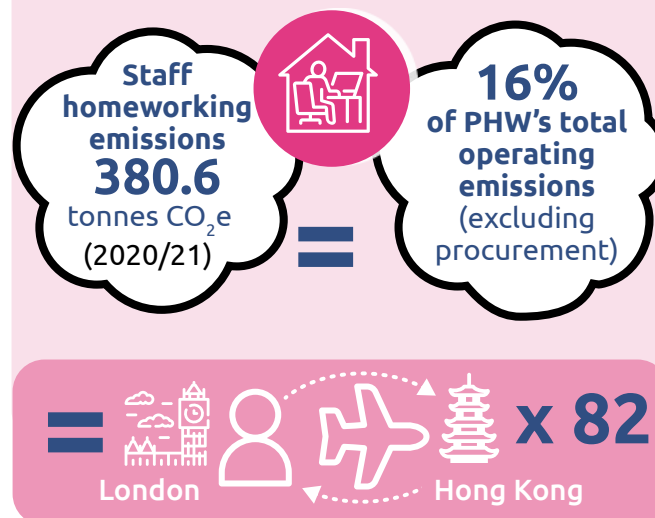
### Travel emissions



### Business/Site emissions



### Homeworking emissions



### Overall recommendations

- PHW needs to continue its efforts in reducing emissions in all areas, with a focus on procurement, travel, buildings, and homeworking in order to work towards achieving Net Zero.
- Engage with supply chain and wider NHS partners to think about sustainable procurement hierarchy.
- Support flexible working through "Work How It Works Best" initiative.
- Increase the proportion of PHW's energy sourced to green/renewable tariffs.
- Work closely with waste contractors and building landlords to improve waste collection data.
- Incentivise staff to use more sustainable travel options and revise travel policies to reduce unnecessary business travel.
- Revise building heating and air conditioning systems to reduce the amount of unnecessary energy used.
- The Health and Sustainability Hub's [Cutting our Carbon Emissions](#) infographic provides guidance on how to reduce your emissions.
- All public bodies in Wales including PHW strive to incorporate the Well-being of Future Generations Act towards helping contribute to a more resilient and prosperous Wales, and think about the long-term impacts of the decisions that we as a business make.